



SD-3540 STANDARD-DUTY CASH DRAWER

STRONG AND DURABLE TO WITHSTAND FREQUENT USE

Like all the products in our SD series, the SD-3540 cash drawer is made of strong materials. Its robust steel casing and shatterproof PVC tray with sturdy metal hold-downs are designed to meet the needs of medium-traffic venues such as school and office cafeterias and clubhouse cantinas. The SD-3540 has sturdy ball-bearing rollers and a robust latch mechanism guaranteed to provide at least 1 million trouble-free open/close cycles.

- Size: 35 cm (W) x 40.5 cm (D) x 10.5 cm (H)
- Robust ball bearing rollers
- Tested for at least 1 million openings
- Strong metal bill clips
- Easy-push opening
- Adjustable and removable inner tray
- 4 bill/8 coin lay-out
- Separation slot for storage of large denominations and value papers



Dimensions: A: 35 cm - B: 40.5 cm - C: 10.5 cm



Removable tray for 8 different coins



Media slot for storage of large denominations and value papers

TECHNICAL SPECIFICATIONS

- Material	Steel casing / Plastic innertray
- POS Safe	Yes
- Security lock	1
- Inner tray	Yes
- Coin compartments	8
- Note compartments	4
- Power	12-24V
- Power cable	RJ12
- Dimensions product (lxwxh)	35.0 x 40.5 x 10.5 cm
- Weight product	5.3 kg
- Dimensions retailbox (lxwxh)	46.0 x 40.1 x 14.3 cm
- Certifications / compliancies	CE, RoHS, REACH

PACKAGE CONTENTS

- Safescan SD-3540
- 2 piece key set

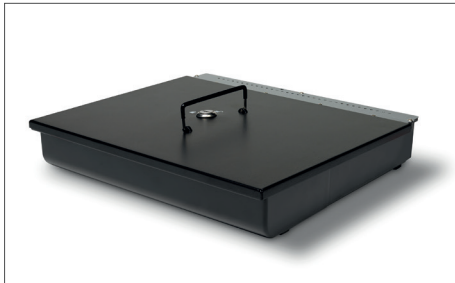


WARRANTY

- 3 years



ACCESSORIES



Safescan 3540L Lockable lid
Art. no: 132-0429



Safescan 3540T Cash drawer tray
Art. no: 132-0428